



Friday 22nd May

St Luke's CE Primary School News

Our Vision

'Growing in Strength, Love and Wisdom We Shine'

We shine like bright stars in the sky

"You are the light of the world. A town built on a hill cannot be hidden. Neither do people light a lamp and put it under a bowl. Instead, they put it on its stand, and it gives light to everyone in the house. In the same way, let your light shine before others, that they may see your good deeds and glorify your Father in heaven." *(Matthew 5:14-16)*

Great Memories, More to Come!

As we come to the end of Summer Term 1, it has been a wonderfully busy half term filled with lots of learning, activities and exciting trips. We are now looking ahead to the Summer Term and all the enjoyment that the warmer weather will bring.

We wish you all a happy May half term and look forward to welcoming everyone back on Tuesday 2nd June for the final half term.

Castle Adventures Come Rain or Shine!

Children from the school enjoyed an exciting and action-packed residential visit to St Briavels Castle last week, led by staff members Mrs Foy, Mrs Bowen, Mr Shenton and Mr Welsh.

Despite the rainy weather, spirits remained high as pupils took part in a range of engaging activities. Their enthusiasm and positive attitudes ensured that the conditions did not dampen what proved to be a memorable experience for all involved.

Throughout the week, the children demonstrated impressive perseverance, tackling new challenges with determination and resilience. They also gained a fascinating insight into life in a historic castle setting.

Staff praised the children for their behaviour and effort, making it a residential trip to remember.

Here comes the sun!

As the weather gets warmer, it's important for children to stay safe and comfortable in the sun while at school. Please ensure your child comes to school wearing a hat with a wide brim or cap, and has had sunscreen applied before arriving. Please make sure that they always have a named refillable water bottle to keep them hydrated. We will encourage regular water breaks and make use of shaded areas wherever possible, but your support in preparing your child for sunny days helps keep them safe, happy, and ready to learn.



Star of the Week

Tiny Tigers	Bodhi
Busy Bees	Beatrice
Performing Pandas	Lennon
Dazzling Dolphins	Todd
Outstanding Owls	Arsin
Fantastic Foxes	Mason K
Learning Leopards	Whole Class

Christian Value Certificate

Tiny Tigers	Olivia
Busy Bees	Aaliyah
Performing Pandas	Whole Class
Dazzling Dolphins	Vivien
Outstanding Owls	Rose
Fantastic Foxes	Kaira
Learning Leopards	Phoebe and Ally

Special Mentions

Robinson-Phillips Excellence in Kindness goes to: Outstanding Owls

Makaton: Lili and Edie

Football: George

Gymnastics: Rhianna

Special Mention to: Leo

TT Rockstars:

Edie, Lynclande and Mason K

Monday 1st June (INSET Day)

Tuesday 2nd June (children return to school)

Friday 5th June

Non-uniform Day – sweet donations please

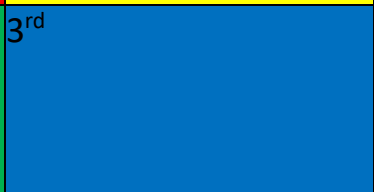
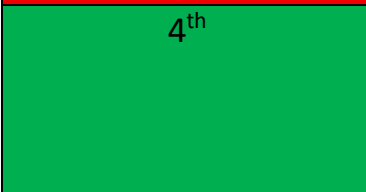
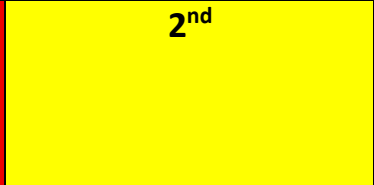
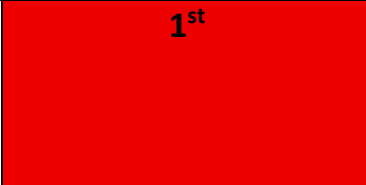
Wednesday 10th June

Great Fire of London Workshop
Performing Pandas

Dojo Points and this week's Task

Draw a poster of a time you have celebrated. What did you enjoy? Why was it special? What were you celebrating?

Return for Friday 5th June for 10 Dojos



Attendance

Have you seen our attendance policy?

We have created a two-page summary with all the key points. To view this please see the link below:

[St Luke's CofE \(VC\) Primary School](#)



Tiny Tigers	84%
Busy Bees	97%
Performing Pandas	92%
Dazzling Dolphins	94%
Outstanding Owls	90%
Fantastic Foxes	95%
Learning Leopards	92%



Class Assemblies - Change of Date and Time

Due to the availability of Apple Tree Town, we have had to reschedule the Tiny Tigers' class assembly.

The assembly will now take place on Thursday 2nd July, with performances at 9:00am and 2:45pm.

Also Busy Bees will take place on Thursday 18th June but will be at 9.00am and 3.15pm. We have chosen both day performances due to dwindling numbers in the evening assemblies. We apologise for any inconvenience and appreciate your understanding.

Key Stage 2 Residential – YHA Ilam Hall

We are pleased to confirm arrangements for the Key Stage 2 residential visit to YHA Ilam Hall from Monday 14th to Thursday 17th June 2027. Set in the beautiful Peak District, Ilam Hall offers a safe and inspiring environment for outdoor learning within a historic building and open countryside.

Children will stay in the hall, with activities led by qualified staff and supported by our team. We will also be joined by pupils from Betley School.

The total cost is £285, covering accommodation, meals (Monday evening to Thursday lunchtime), activities, transport, and insurance. A £35 non-refundable deposit is required by Friday 5th June, with the option to pay the remainder in instalments throughout the year.

Further details about the activity programme will follow. If you have any questions, please speak to a member of staff. We look forward to a fantastic experience for all involved!

This is for all children that will be in Key Stage 2 from September 2026 onwards. Thank you.

[Ilam Hall - Residential Visit \(June 2027\) – Fill in form](#)

Sports Day -Tuesday 16th June

Sports Day will take place on Tuesday 16th June on the school field. We aim to start promptly, as close to 9:00am as possible, and finish at approximately 11:00am.

We look forward to welcoming you to support the children. Seating will be available; however, you are very welcome to bring a blanket or camping chair if you would prefer.

All children should come to school in their PE kits and bring a water bottle on the day.

Please note that the event is weather dependent. If there is significant rain on the day or the day before, we will carry out an early morning ground inspection to determine whether it is safe to proceed. In the event of cancellation, we will inform you as soon as possible.

Let's hope for dry weather!

🌞 Community Event & Summer Fayre 🌞

We are excited to begin planning a community event this Summer Term, which will also be our Summer Fayre!

This will be a fantastic opportunity to bring everyone together and celebrate all that our local community has to offer.

Alongside a range of local groups and organisations showcasing the wonderful opportunities available in our area, there will be lots of fun fayre stalls, including:

- 🎯 Nerf gun battles
- 💧 Soak the Teacher
- 🎫 Raffles
- 🎨 Crafts

...and much more!

If you are part of a club, organisation, or community group and would like to take part, we would love to hear from you. Please message this page with your availability and a brief outline of what you would like to share on the day.

Please share this post with anyone who might like to take part or attend.

Let's celebrate, connect, and strengthen our community together 🧡



Our School Prayer

God give me the strength to accept the things I cannot change, Courage to change the things I can, And wisdom to know the difference. With the help of your love. Amen.



The Bible teaches that celebrations should be full of happiness. It is a way to shout and cheer for the wonderful things God has done. Celebrations are for every person to enjoy, and they help bring our communities closer together.



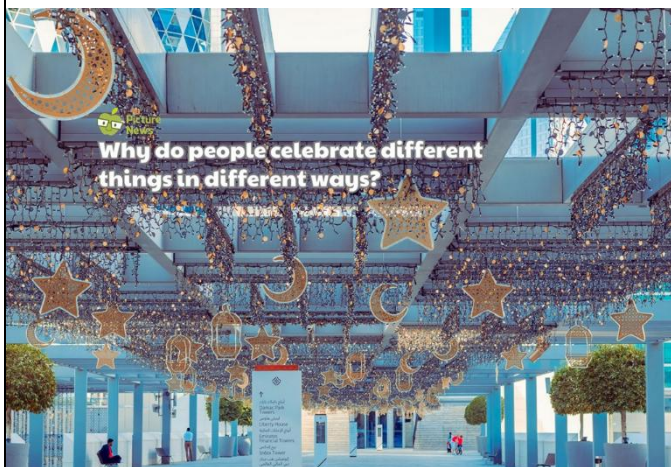
Praise the LORD.
Praise God in his sanctuary;
praise him in his mighty heavens.
Praise him for his acts of power;
praise him for his surpassing greatness.
Praise him with the sounding of the trumpet,
praise him with the harp and lyre,
praise him with tambourine and dancing,
praise him with the strings and pipe,
praise him with the clash of cymbals,
praise him with resounding cymbals.
Let everything that has breath praise the LORD.
Praise the LORD.

Psalm 150



British Values

Next week:



Which British value do you think this week's story highlights?



This story shows **Mutual Respect and Tolerance** by reminding us that everyone's beliefs are important and should be treated with respect.

The story highlights **Individual Liberty** as we all have the right to make our own choices, such as the freedom for people to follow their religion and celebrate special festivals that are important to them.



Do you agree with either person, or think something different? _____

In the news this week

This week, people in the UK and across the world are celebrating Eid al-Adha. Families and communities will come together to pray, share meals, and give to those in need, with celebrations taking place in many different ways. The festival is a time to reflect on kindness, generosity, and the importance of helping others.

Things to talk about at home ...

- > What celebrations are important in your family? Why?
- > Have you ever learned about a celebration that is different from your own? If so, which?
- > Why do you think people enjoy celebrating together?
- > What are some ways we can show respect for other people's traditions?

Makaton Sign of the week...

Each week we'll be sharing a new Makaton sign that the children are learning in school. You'll find the sign in this newsletter, along with a link to a video completed by Mrs Easby if you'd like to see more information or practise at home. Please ask your child to show you the sign—they'll love teaching you what they've learned! What is Makaton? Makaton is a way of communicating that uses simple signs and symbols alongside speech. It helps children (and adults) to understand and express themselves, especially if they find language tricky. You may have seen Makaton being used on TV, in hospitals, or in other schools—it helps make communication more inclusive for everyone. By learning Makaton together, we're giving all our children an extra tool to support understanding, confidence, and inclusion.

This week's the Makaton Group combine all of the colours and sing the song.

[St Luke's CofE \(VC\) Primary School - Rainbow Song](#)

Music for June

About: Grażyna Bacewicz Biernacka was a Polish composer and violinist of Lithuanian origin. She is the second Polish female composer to have achieved national and international recognition, the first being Maria Szymanowska in the early 19th century. Many of her compositions feature the violin although she composed chamber music, orchestral works and scores for films and radio works. She continued to write music during WWII, during which she continued to compose music, even giving secret underground concerts in Warsaw during the Nazi occupation.

Genres: Classical, Chamber Music, Film Scores

Active from: 1924-1968



Snacks

Children order snacks on a Monday for the week. If your child is absent on Monday they will be able to order on their return to school.

Lunches

To go alongside the daily menu below, there is also Hot Tomato Pasta, Jacket Potatoes with Baked Beans/Cheese or Tuna and sandwiches with either ham, cheese or tuna.

Tuesday: Sausage with Mash and Gravy

Vegetarian option – Garden Sausage with Mash and Gravy

Wednesday: Roast of the Day with Roasties, Stuffing & Gravy

Vegetarian option – Cheesy Broccoli Bake with Roasties

Thursday: Penne with Beef Bolognese

Vegetarian option – Sunshine Sweet Potato Curry with Rice

Friday: Fish Fingers with Chips

Vegetarian option – Crispy Garden Fingers with Chips

Snacks	
Milkshake	82p
Cup of Milk	38p
Bagel	38p
Pancake	49p
Toast	38p
Crumpet	38p

[School Meals w/c 08/06/2026 \(Week 1\) – Fill in form](#)

Betley Festival Weekend (Volunteers needed)

Can you help at Betley's Big Weekend 2026?

Friday 31st July – Sunday 2nd August 2026

We're looking for volunteers to join us for an exciting weekend full of festival vibes.

As a volunteer, you'll receive:

A wristband giving you access to all three events across the weekend.

A £10 refreshment voucher to use at selected vendors.

The chance to meet new people and be part of something special.

An opportunity to apply for funding for your organisation (subject to the event being successful).

Whether you've helped out before or this is your first time, we'd love to have you involved and give back to the community together

We're especially looking for help as:

Set Up & Dismantle crew

BETLEY'S BIG WEEKEND
PROGRAMME OF EVENTS
1ST - 3RD AUGUST 2025
BETLEY COURT FARM
LIVE MUSIC & TRACTOR PULLING ALL WEEKEND, FUN FOR ALL THE FAMILY

FRIDAY 31ST JULY
WARM UP YOUR WEEKEND WITH SOME TRACTOR ACTION

BETLEY SHOW 2025
A TRADITIONAL FAMILY DAY OUT
FREE ENTERTAINMENT & ACTIVITIES ALL DAY
VISIT OVER 100 ARTISAN RETAILERS

SUPERHERO SUNDAY
FINISHING OFF THE WEEKEND WITH LAWNMOWER MADNESS

E VAUGHAN & SONS FARMING
hamptons.group.uk
BROAD OAK GROUP
UTOPIA
James Du Pavey

Entrance Team members
Horse Show Stewards

Register here:

<https://www.betleyshow.com/volunteering/>

Important Dates	
Monday, 1st June 2026	INSET Day (school closed to pupils)
Tuesday, 2nd June 2026	School Opens
Friday 5 th June 2026	Non-uniform Day – Sweets please for a sweet tombola
Tuesday 16 th June	Sports Day 9am
Thursday 18th June	Busy Bees' Class Assembly 9am and 3.15pm and Cake Sale
Thursday 18 th June 2026	Fathers' Day cakes and crafts 2.30pm Father's (special person) Day Cake and Craft - Thursday, 18th June, 2026 – Fill in form
Thursday 19 th June 2026	Non-Uniform Day – Hamper item please Tiny Tigers/Busy Bees – Summer treats Performing Pandas/Dazzling Dolphins – Pamper Hamper Outstanding Owls – Rainy Day activities Fantastic Foxes/Learning Leopards – Summer Activities
Tuesday 23 rd June 2026	Reserved Sports Day 9am
Thursday 25 th June 2026	Newcastle Academy – Transition Day
Thursday, 25th June 2026	Tiny Tigers – Appletree Town trip
Wednesday 1st July and Thursday 2nd July	Thistley Hough Academy and Sir Thomas Boughey-Transition Days
Thursday 2nd July 2026	Tiny Tigers' Class Assembly 9am and 2.45pm and Cake Sale
Thursday 2 nd July	St John Fisher – Transition Day
Saturday 4 th July	Summer Fayre 1-4pm
Monday 6 th and Tuesday 7 th July	Madeley High School – Transition Days
Wednesday 8 th July 2026	Musical Celebration 1.30pm (All parents are welcome)
Thursday 9 th July 2026	Prom and Disco 3-4.30pm KS1 and 6-8pm for KS2
Friday 10 th July 2026	Reports out
Tuesday 14 th July 2026	1.30pm and 5pm Year 6 Play
Friday 17 th July 2026	Leavers' Assembly 1pm
Friday, 17 th July 2026	School closes for Summer Holidays
Monday, 20th July 2026	INSET Day (School closed to pupils)
Tuesday, 1st September 2026	INSET Day (School closed to pupils)
Wednesday, 2nd September 2026	School Opens
Friday, 23rd October 2026	School closes at 3.10 p.m. for Half Term
Monday, 26th October 2026 to Friday, 30th October 2026	Half Term