



Friday 8<sup>th</sup> May

# St Luke's CE Primary School News

## Our Vision

**'Growing in Strength, Love and Wisdom We Shine'**

**We shine like bright stars in the sky**

"You are the light of the world. A town built on a hill cannot be hidden. Neither do people light a lamp and put it under a bowl. Instead, they put it on its stand, and it gives light to everyone in the house. In the same way, let your light shine before others, that they may see your good deeds and glorify your Father in heaven." (Matthew 5:14-16)

### Busy Bees Meet Florence Nightingale

Busy Bees enjoyed an exciting Florence Nightingale workshop as part of their history learning. Through storytelling, drama and hot-seating, the children explored her life and the challenges she faced. They recreated Scutari Hospital, investigated Crimean War conditions, and examined Victorian artefacts to support their enquiries. By comparing hospital life before and after Florence Nightingale, the children clearly understood her lasting impact on nursing and healthcare.

### Brownie Talk

Carol and Janice recently visited school to spend time with a group of our girls who have shown an interest in joining Brownies. During the session, the girls learned more about what Brownies is all about and enjoyed a taster of the fun, friendship and exciting opportunities it offers. The visit helped spark enthusiasm and confidence, giving the girls a chance to ask questions, try activities and see how being part of Brownies can support teamwork, new skills and having fun together. For more information contact them on: [silverdalebrownies02@gmail.com](mailto:silverdalebrownies02@gmail.com) It takes place on Wednesday 6-7.30pm.

### Year 6 SATS

Next week marks SATs week for our Year 6 children. They have all worked incredibly hard and shown great commitment in preparing for these assessments.

Children are welcome to come into school from 8:30am each morning if they would like to have breakfast with us before the tests begin.

Good luck, Year 6 we are all very proud of you and know you will do your very best.

### Plant donation

🌱 Last week, we shared our plans to create a special nature area in our school grounds to celebrate the 100th birthday of David Attenborough, focusing on planting to attract insects and support local wildlife.

We are delighted to say that Elmside Nursery have kindly donated plants to help us get started—such a thoughtful and generous contribution. Thank you!



### Star of the Week

Tiny Tigers	Pearl
Busy Bees	Aaliyah
Performing Pandas	Whole Class
Dazzling Dolphins	Valentino
Outstanding Owls	Nancy
Fantastic Foxes	Maddie
Learning Leopards	Lilley

### Christian Value Certificate

Tiny Tigers	Renee-Mae
Busy Bees	Henry
Performing Pandas	Jacob and Akram
Dazzling Dolphins	Amelia M
Outstanding Owls	Arsin
Fantastic Foxes	Harry
Learning Leopards	Samuel

### Special Mentions

**Robinson-Phillips Excellence in Kindness goes to:** Chester

**Mr Shenton's award: Year 3 and 4 Cross Country Team**

**Makaton: Oscar and Luella (PP)**

**Football:** Chester, Reggie and Zak

**Monday 11<sup>th</sup> May**  
No clubs – training

**Monday 11<sup>th</sup> May – Thursday 14<sup>th</sup> May**  
SATS week for Y6

**Monday 18<sup>th</sup> May**  
Residential Week – please bring in children for 8.20am. Thank you

### Dojo Points and this week's Task

Create your own special *Mission Scroll!*

1. Take a piece of paper and carefully roll the top and bottom edges to make it look like a scroll.
2. At the top, write: **"Acts 1:6–11 – My Mission."**
3. Think about how you can help others. Draw or write **three ways** you can make a difference, such as cheering someone up, being kind, or helping to keep the peace.
4. Decorate your scroll with colours, patterns, or symbols.
5. Finally, roll it up and tie it to keep your mission safe.

Return for Friday 15<sup>th</sup> May for 10 Dojos.

1st

2<sup>nd</sup>

4<sup>th</sup>

3<sup>rd</sup>

### Attendance

Have you seen our attendance policy?

We have created a two-page summary with all the key points. To view this please see the link below:

[St Luke's CofE \(VC\) Primary School - Attendance](#)



Tiny Tigers	89%
Busy Bees	94%
Performing Pandas	93%
Dazzling Dolphins	93%
Outstanding Owls	90%
Fantastic Foxes	95%
Learning Leopards	93%

### Year 3/4 Cross Country

It was wonderful to see the Year 3 and 4 children taking part in cross country for the very first time. They demonstrated great determination, enthusiasm and resilience throughout the event, encouraging one another every step of the way. The children pushed themselves beyond their comfort zones and should feel extremely proud of their achievements and their positive attitudes. Well done to all involved!



## Lost Property

Please ensure all items of your child's clothing are clearly labelled with their name. This really helps us return lost items to their owners. Thank you for your support.

All uniform currently in lost property will be laid out on a table on the main playground every Friday morning, giving you the opportunity to check if anything belongs to your child.

We will continue to share reminders about lost property until 22nd May.



**MOUNTAIN OF LOST PROPERTY!**

WE HAVE A **HUGE** PILE OF LOST PROPERTY IN SCHOOL!

**THIS INCLUDES:**

- ✓ Navy blue jumpers
- ✓ Cardigans
- ✓ Coats

**PLEASE COME AND CHECK** if any items belong to your child.

ALL UNCLAIMED ITEMS WILL BE DONATED OR RECYCLED AFTER

Let's reunite these items with their owners!

THANK YOU FOR YOUR SUPPORT  
- St Luke's School -

## 🌻 Community Event & Summer Fayre 🌻

We are excited to begin planning a community event this Summer Term, which will also be our Summer Fayre! This will be a fantastic opportunity to bring everyone together and celebrate all that our local community has to offer.

Alongside a range of local groups and organisations showcasing the wonderful opportunities available in our area, there will be lots of fun fayre stalls, including:

- 🎯 Nerf gun battles
- 💧 Soak the Teacher
- 🎫 Raffles
- 🎨 Crafts

...and much more!

If you are part of a club, organisation, or community group and would like to take part, we would love to hear from you. Please message this page with your availability and a brief outline of what you would like to share on the day.

Please share this post with anyone who might like to take part or attend.

Let's celebrate, connect, and strengthen our community together 🧡



ST LUKE'S PRIMARY SCHOOL

**SUMMER FAYRE AND COMMUNITY DAY!**

SATURDAY 4TH JULY  
1pm - 4pm

**STALLS    REFRESHMENTS**

NERF GUN BATTLES    ACTIVITIES

CRAFTS    SOAK THE TEACHER

AND MUCH MORE!

FREE ENTRY

ST Luke's Primary School  
ST5 6QJ

## Our School Prayer

**God give me the strength to accept the things I cannot change, Courage to change the things I can, And wisdom to know the difference. With the help of your love. Amen.**

Let the message of Christ dwell among you richly as you teach and admonish one another with all wisdom through psalms, hymns, and songs from the Spirit, singing to God with gratitude in your hearts.

**Colossians 3:16**



The Bible teaches that music is a powerful tool for communication. When people sing the same words together, it creates unity because everyone is focusing on the same message at the same time.



## British Values

Next week:



Which British value do you think this week's story highlights?



I can see **Democracy** because everyone can use their right to vote to help decide the winner of the contest.

The contest celebrates lots of cultures and traditions showing **Mutual Respect and Tolerance**.



Do you agree with either person, or think something different?

## In the news this week

This week, countries from across Europe and beyond are taking part in the Eurovision Song Contest. Each country performs a song, and millions of people watch and vote for their favourites. The contest celebrates different styles of music, languages, and cultures from around the world.

### Things to talk about at home ...

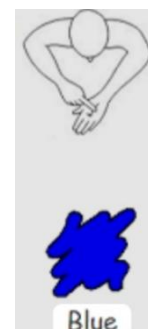
- > What kind of music do you enjoy most, and why? Does everyone in your house enjoy the same music?
- > Why do you think people from different countries enjoy listening to music together?
- > Do you believe competitions like Eurovision are fair? Why?
- > In your view, does music bring people together, or can it sometimes divide opinions?

### Makaton Sign of the week...

Each week we'll be sharing a new Makaton sign that the children are learning in school. You'll find the sign in this newsletter, along with a link to a video completed by Mrs Easby if you'd like to see more information or practise at home. Please ask your child to show you the sign—they'll love teaching you what they've learned! What is Makaton? Makaton is a way of communicating that uses simple signs and symbols alongside speech. It helps children (and adults) to understand and express themselves, especially if they find language tricky. You may have seen Makaton being used on TV, in hospitals, or in other schools—it helps make communication more inclusive for everyone. By learning Makaton together, we're giving all our children an extra tool to support understanding, confidence, and inclusion.

This week's sign is...blue and green

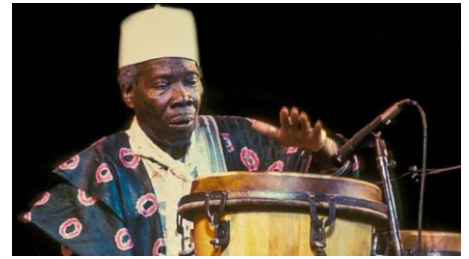
[St Luke's CofE \(VC\) Primary School - Week 10 Blue and Green](#)



## Music of the Week

### Jin-Go-Lo-Ba (Jin-Go-Low-Bah)

- The song was written by Nigerian drummer **Babatunde Olatunji** in 1959.
- Its title comes from the Yoruba language and is often interpreted as meaning **“Everybody dance!”** or **“Drums are calling.”**
- It celebrates rhythm, community, and the joy of music.



#### **Musical Style** 🎧

- “Jin-Go-Lo-Ba” is built around **African drumming rhythms**, especially using conga-style drums.
- It features **call-and-response singing**, where a leader sings a line and others repeat it—common in African music traditions.
- The song has a strong, repetitive beat that makes it perfect for dancing and group participation.

## Snacks

Children order snacks on a Monday for the week. If your child is absent on Monday they will be able to order on their return to school.

Snacks	
Milkshake	82p
Cup of Milk	38p
Bagel	38p
Pancake	45p
Toast	38p
Crumpet	38p

## Lunches

To go alongside the daily menu below, there is also Hot Tomato Pasta, Jacket Potatoes with Baked Beans/Cheese or Tuna and sandwiches with either ham, cheese or tuna.

**Monday:** Margherita Pizza with Jacket Wedges

Vegetarian option – Rainbow Pizza with Jacket Wedges

**Tuesday:** Sausage with Mash and Gravy

Vegetarian option – Garden Sausage with Mash and Gravy

**Wednesday:** Roast of the Day with Roasties, Stuffing & Gravy

Vegetarian option – Cheesy Broccoli Bake with Roasties

**Thursday:** Penne with Beef Bolognese

Vegetarian option – Sunshine Sweet Potato Curry with Rice

**Friday:** Fish Fingers with Chips

Vegetarian option – Crispy Garden Fingers with Chips

Pre order link - [School Meals w/c 18/05/2026 \(Week 1\) – Fill in form](#)

## Betley Festival Weekend (Volunteers needed)

### Volunteering - Betley Show

☀️ Can you help at Betley’s Big Weekend 2026? ☀️

📅 Friday 31st July – Sunday 2nd August 2026

We’re looking for volunteers to join us for an exciting weekend full of festival vibes 🎵 🎨

As a volunteer, you’ll receive:

🌟 A wristband giving you access to all three events across the weekend

🍔 A £10 refreshment voucher to use at selected vendors

🤝 The chance to meet new people and be part of something special

📄 An opportunity to apply for funding for your organisation (subject to the event being successful)

Whether you’ve helped out before or this is your first time, we’d love to have you involved and give back to the community together ❤️

We’re especially looking for help as:

🔧 Set Up & Dismantle crew

🚫 Entrance Team members

🐎 Horse Show Stewards

👉 Register here: <https://www.betleyshow.com/volunteering/>

Important Dates	
Monday 11th May 2026	No clubs on Monday
Monday 11 <sup>th</sup> May 2026	SATS week
Monday 18 <sup>th</sup> May 2026	Residential for Key Stage 2
Monday, 1st June 2026	INSET Day (school closed to pupils)
Tuesday, 2nd June 2026	School Opens
Friday 5 <sup>th</sup> June 2026	Non-uniform Day – Sweets please for a sweet tombola
Tuesday 16 <sup>th</sup> June	Sports Day 9am
Thursday 18 <sup>th</sup> June	Busy Bees' Class Assembly 9am and 5pm and Cake Sale
Thursday 18 <sup>th</sup> June 2026	Fathers' Day cakes and crafts 2.30pm <a href="#">Father's (special person) Day Cake and Craft - Thursday, 18th June, 2026 – Fill in form</a>
Thursday 19 <sup>th</sup> June 2026	Non-Uniform Day – Hamper item please Tiny Tigers/Busy Bees – Summer treats Performing Pandas/Dazzling Dolphins – Pamper Hamper Outstanding Owls – Rainy Day activities Fantastic Foxes/Learning Leopards – Summer Activities
Tuesday 23 <sup>rd</sup> June 2026	Reserved Sports Day 9am
Thursday 25 <sup>th</sup> June 2026	Tiny Tigers' Class Assembly 9am and 5pm and Cake Sale
Thursday 25 <sup>th</sup> June 2026	Newcastle Academy – Transition Day
Wednesday 1st July and Thursday 2nd July	Thistley Hough Academy and Sir Thomas Boughey-Transition Days
Thursday 2 <sup>nd</sup> July	St John Fisher – Transition Day
Saturday 4 <sup>th</sup> July	Summer Fayre 1-4pm
Monday 6 <sup>th</sup> and Tuesday 7 <sup>th</sup> July	Madeley High School – Transition Days
Wednesday 8 <sup>th</sup> July 2026	Musical Celebration 1.30pm (All parents are welcome)
Thursday 9 <sup>th</sup> July 2026	Prom and Disco 3-4.30pm KS1 and 6-8pm for KS2
Friday 10 <sup>th</sup> July 2026	Reports out
Tuesday 14 <sup>th</sup> July 2026	1.30pm and 5pm Year 6 Play
Friday 17 <sup>th</sup> July 2026	Leavers' Assembly 1pm
Friday, 17 <sup>th</sup> July 2026	School closes for Summer Holidays
Monday, 20th July 2026	INSET Day (School closed to pupils)
Tuesday, 1 <sup>st</sup> September 2026	INSET Day (School closed to pupils)
Wednesday, 2 <sup>nd</sup> September 2026	School Opens