



Friday 27<sup>th</sup> March

# St Luke's CE Primary School News

## Our Vision

**'Growing in Strength, Love and Wisdom We Shine'**

**We shine like bright stars in the sky**

"You are the light of the world. A town built on a hill cannot be hidden. Neither do people light a lamp and put it under a bowl. Instead, they put it on its stand, and it gives light to everyone in the house. In the same way, let your light shine before others, that they may see your good deeds and glorify your Father in heaven." *(Matthew 5:14-16)*

### End of Term Thanks & Easter Wishes 🌸

As we come to the end of another busy term, I want to say a heartfelt thank you to our wonderful St Luke's community. It may have been a short term, but it has certainly been a busy one! Wishing you all a restful and enjoyable Easter break. Thank you for your continued support, and we look forward to welcoming everyone back on Monday 13th April.

### Thank you to the PTFA and our school community

We would like to say a huge thank you to our dedicated group of parents who lead the PTFA, as well as to all families for your continued support this term. We are working busily behind the scenes to ensure that the money raised is used to benefit all of our children. This includes funding rewards for our Dojo Shop, new picnic benches for the Junior playground, and additional equipment for the yard to enhance playtimes. We are also very excited that, in May, we will be welcoming a performance of The Wizard of Oz, fully funded by the PTFA, and we have just booked the Year 6 beach trip as well. Thank you once again for your generosity and ongoing support, it truly makes a difference to our school community.

### Stronger Together: Celebrating Our Church Partnerships

We are incredibly grateful for the continued support of Silverdale Methodist Church and Elim Pentecostal Church this term. Both churches have played a valuable role in enriching our school community, particularly through their commitment to leading and supporting our weekly collective worship, which the children always engage with thoughtfully. We would also like to extend a special thank you to Elim Pentecostal Church for their generous gift of Easter eggs for every child, which was received with great excitement and appreciation. Silverdale Methodist Church have also gone above and beyond in planning and delivering meaningful activities for our pupils, whether during visits to the church or when coming into school. The children especially enjoyed their recent trip on Monday, which provided a memorable and engaging experience for all involved. It was also lovely to attend St Luke's Church on Thursday, giving the children another opportunity to reflect and come together in a special setting.



### Star of the Week

Tiny Tigers	Max
Busy Bees	Darcie
Performing Pandas	Haider
Dazzling Dolphins	Elio
Outstanding Owls	Arsin
Fantastic Foxes	Josh
Learning Leopards	Meadow

### Christian Value Certificate

Tiny Tigers	Bodhi
Busy Bees	George
Performing Pandas	Whole Class
Dazzling Dolphins	Arthur
Outstanding Owls	Oliver
Fantastic Foxes	Mason
Learning Leopards	Skylar

### Special Mentions

**Robinson-Phillips Excellence in Kindness goes to:** Skyla-Rose

**Mr Shenton's award:** Football Team and Sports Leaders

**Makaton:** The whole club  
**Swimming:** Edie, Archie, Elliot and Rhianna

**Football:** Archie

**Dancing:** Layla and Luella

**Tuesday 14<sup>th</sup> April**  
Cricket Day (Y1-6)

**Wednesday 15<sup>th</sup> April**  
Phonics Workshop 9am or 2.30pm

**Thursday 16<sup>th</sup> April**  
Photo Day!

## Dojo Points and this week's Task

This week's task is: can you draw or create an Easter garden. It could be:

- A sunrise
- A garden
- A cross with flowers
- An empty tomb with the stone rolled away

Every Dojo task completed gets rewarded by 20 Dojos!

Return for Friday 17<sup>th</sup> April

3<sup>rd</sup>

4<sup>th</sup>

2<sup>nd</sup>

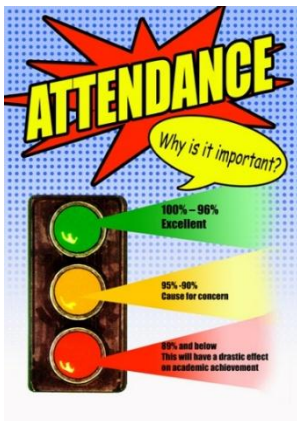
1<sup>st</sup>

## Attendance

Have you seen our attendance policy?

We have created a two-page summary with all the key points. To view this please see the link below:

[St Luke's CofE \(VC\) Primary School - Attendance](#)



Tiny Tigers	92%
Busy Bees	97%
Performing Pandas	87%
Dazzling Dolphins	93%
Outstanding Owls	87%
Fantastic Foxes	97%
Learning Leopards	96%

## Pupil Voice in Action: Shaping Our Dojo Rewards and Playground Future

Today we held our final Spring Term School Council meetings, where the children shared some fantastic ideas for our Dojo Rewards and Dojo Shop. Their creativity and enthusiasm really shone through, and we are excited to begin developing these ideas and sharing them in the Summer Term. The children also worked together to gather and organise suggestions for new playground equipment, showing great teamwork and thoughtfulness about how to improve our school environment for everyone. We thoroughly enjoyed discussing how we could best spend our funds, and we would like to say a big thank you to our School Council for their hard work and contributions.

## Champions on the Pitch: St Luke's Triumphs in Style! 🏆 ⚽

🏆 ⚽ What a fantastic afternoon for St Luke's football team!

Winning all three games and securing the league title is an incredible achievement. The team played with real determination, worked brilliantly together, and showed outstanding sportsmanship throughout. We are so proud of every single player, a truly well-deserved success!

👏 Overall record: Played 7, won 6 and drew 1 – conceding just one goal in the entire league! An outstanding performance.

A big thank you to Mr Shenton and all the staff at St Luke's for their coaching and guidance, it makes such a difference.

#TeamStLukes #Champions #SchoolSport #Proud #Teamwork #Respect #FootballSuccess



## Looking ahead:

### Phonics Workshop

We would like to warmly invite parents and carers from Busy Bees and Tiny Tigers to come into school to watch a live phonics session in action in Year 1. You will have the opportunity to observe a 20-minute lesson, followed by time to speak with Mrs Smith or Miss Bowen about how phonics is taught and assessed at school. Sessions will take place on Wednesday 15th April at 9:00am or 2:30pm. We hope many of you will be able to join us and gain a deeper insight into how we support children's early reading skills.

### Summer Term

[Performing Pandas - National Forest Adventure Park Thursday, 23rd April 2026](#)

[Busy Bees – Florence Nightingale Workshop – Friday 8<sup>th</sup> May](#)

### Summer 2027!

After Easter, we hope to share full details for next year's residential trip. We are excited to let you know that we will be travelling to Ilam Hall for a four-day residential in June 2027. We are currently awaiting confirmation of coach travel costs, and we will pass on the final price and all further information as soon as it is available.

## Our School Prayer

**God give me the strength to accept the things I cannot change, Courage to change the things I can, And wisdom to know the difference. With the help of your love. Amen.**

The Bible teaches that every person is important and deserves to be seen and heard. In any country, everyone should have an equal place in society. This teaches us that true representation means including everyone and making sure that every background is respected and celebrated.



After this I looked, and there before me was a great multitude that no one could count, from every nation, tribe, people and language, standing before the throne and before the Lamb. They were wearing white robes and were holding palm branches in their hands.

**Revelation 7:9**



## British Values

### Next week:



### Democracy

To show democracy in action, the Bank of England gave everyone a say by voting for their favourite theme. The bank chose nature because it was the most popular choice among the public.

## In the news this week

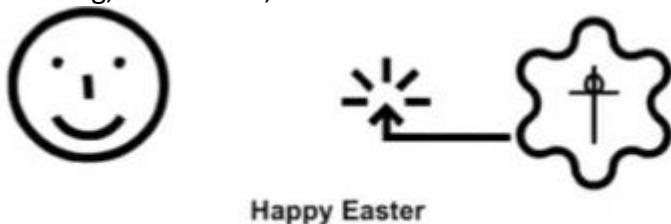
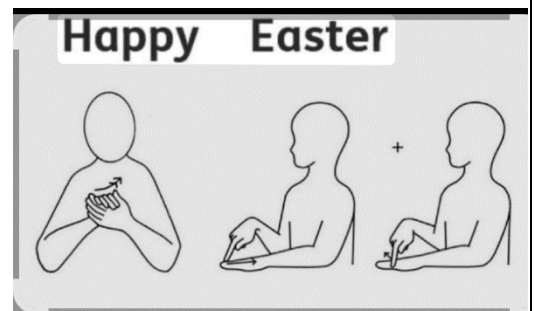
The Bank of England, that designs and makes the UK's banknotes, has said that future notes will include British wildlife, such as animals or plants, instead of historical figures. At the moment, UK banknotes feature the British monarch on the front and well-known people from history on the back. However, some believe the back of banknotes should instead celebrate nature, showing animals, birds, or plants that live in the UK.

### Things to talk about at home ...

- > Look at a coin or banknote you have at home. What pictures or symbols can you see on it? Why might they have been chosen?
- > Different countries show different things on their money, such as leaders, buildings, or wildlife. What do you feel money should say about a country?
- > Imagine you could design your own coin or banknote. What picture would you include and why? Ask someone at home about what they would choose.

### Makaton Sign of the week...

Each week we'll be sharing a new Makaton sign that the children are learning in school. You'll find the sign in this newsletter, along with a link to a video completed by Mrs Easby if you'd like to see more information or practise at home. Please ask your child to show you the sign—they'll love teaching you what they've learned! What is Makaton? Makaton is a way of communicating that uses simple signs and symbols alongside speech. It helps children (and adults) to understand and express themselves, especially if they find language tricky. You may have seen Makaton being used on TV, in hospitals, or in other schools—it helps make communication more inclusive for everyone. By learning Makaton together, we're giving all our children an extra tool to support understanding, confidence, and inclusion.



Happy Easter

This week's sign is...Happy Easter

[St Luke's CofE \(VC\) Primary School - Week 6 Happy Easter](#)

### Music of the Week

[The Beatles - The Beatles - I Want To Hold Your Hand \(Live on The Ed Sullivan Show\)](#)

**About:** The Beatles were an English rock band, formed in Liverpool in 1960, that comprised John Lennon, Paul McCartney, George Harrison and Ringo Starr. They are regarded as the most influential band of all time and were integral to the development of 1960s counterculture and popular music's recognition as an art form. The Beatles are the best-selling music act of all time, with estimated sales of 600 million units worldwide.

**Genres:** Rock & Pop

**Active from:** 1960 - 1970

**Origin:** Liverpool, U.K.



### Snacks

#### Snacks

Milkshake

82p

Children order snacks on a Monday for the week. If your child is absent on Monday they will be able to order on their return to school.

Cup of Milk	38p
Bagel	38p
Pancake	45p
Toast	38p
Crumpet	38p

### Lunches

To go alongside the daily menu below, there is also Hot Tomato Pasta, Jacket Potatoes with Baked Beans/Cheese or Tuna and sandwiches with either ham, cheese or tuna.

**Monday:** Margherita Pizza with Jacket Wedges

Vegetarian option – Rainbow Pizza with Jacket Wedges

**Tuesday:** Spring Turkey Bow Tie Pasta

Vegetarian option – Garden Bolognese Bow Tie Pasta

**Wednesday:** Roast of the Day with Roasties and Gravy

Vegetarian option – Butternut Squash Hot Pot with Roasties

**Thursday:** Chicken Stir-Fry Rice

Vegetarian option – Rainbow Noodle Bowl

**Friday:** Fish Fingers with Chips

Vegetarian option – Cheesy Bean Whirls with Chips

[School Meals w/c 20/04/2026 \(Week 3\) – Fill in form](#)

Betley Festival Weekend (Volunteers needed)

[Volunteering - Betley Show](#)

☀️ Can you help at Betley's Big Weekend 2026? ☀️

📅 Friday 31st July – Sunday 2nd August 2026

We're looking for volunteers to join us for an exciting weekend full of festival vibes 🎵 🎉

As a volunteer, you'll receive:

🌟 A wristband giving you access to all three events across the weekend

🍔 A £10 refreshment voucher to use at selected vendors

🤝 The chance to meet new people and be part of something special

📄 An opportunity to apply for funding for your organisation (subject to the event being successful)

Whether you've helped out before or this is your first time, we'd love to have you involved and give back to the community together ❤️

We're especially looking for help as:

🔧 Set Up & Dismantle crew

🚫 Entrance Team members

🐎 Horse Show Stewards

👉 Register here:

🔗 <https://www.betleyshow.com/volunteering/>

Important Dates	
Monday, 30th March 2026 to 10th April 2026 Easter Holidays	
Thursday, 16 <sup>th</sup> April 2026	Photos - Class Groups, Leavers, Reception Individuals and Smylers Graduations
Thursday 22 <sup>nd</sup> April	Dazzling Dolphins' Class Assembly 9am and 5pm and Cake Sale
Thursday, 23 <sup>rd</sup> April 2026	PP – National Forest Adventure Farm
Thursday 30 <sup>th</sup> April	Performing Pandas' Class Assembly 9am and 5pm and Cake Sale
Friday, 8 <sup>th</sup> May 2026	Busy Bees - Florence Nightingale Workshop
Monday 11 <sup>th</sup> May 2026	SATS week
Monday 18 <sup>th</sup> May 2026	Residential for Key Stage 2
Monday, 1st June 2026	INSET Day (school closed to pupils)
Tuesday, 2nd June 2026	School Opens
Tuesday 16 <sup>th</sup> June	Sports Day 9am
Thursday 18 <sup>th</sup> June	Busy Bees' Class Assembly 9am and 5pm and Cake Sale
Thursday 18 <sup>th</sup> June 2026	Fathers' Day cakes and crafts 2.15pm
Tuesday 23 <sup>rd</sup> June 2026	Reserved Sports Day 9am
Thursday 25 <sup>th</sup> June 2026	Tiny Tigers' Class Assembly 9am and 5pm and Cake Sale
<b>Wednesday 1st July and Thursday 2nd July</b>	<b>Thistley Hough Academy - Transition Days</b>
Wednesday 8 <sup>th</sup> July 2026	Musical Celebration 1.30pm (All parents are welcome)
Thursday 9 <sup>th</sup> July 2026	Prom and Disco 3-4.30pm KS1 and 6-8pm for KS2
Friday 10 <sup>th</sup> July 2026	Reports out
Tuesday 14 <sup>th</sup> July 2026	1.30pm and 5pm Year 6 Play
Friday 17 <sup>th</sup> July 2026	Leavers' Assembly 1pm
Friday, 17 <sup>th</sup> July 2026	School closes for Summer Holidays
Monday, 20th July 2026	INSET Day (School closed to pupils)