



Friday 30<sup>th</sup> January

# St Luke's CE Primary School News

## Our Vision

**'Growing in Strength, Love and Wisdom We Shine'**

**We shine like bright stars in the sky**

"You are the light of the world. A town built on a hill cannot be hidden. Neither do people light a lamp and put it under a bowl. Instead, they put it on its stand, and it gives light to everyone in the house. In the same way, let your light shine before others, that they may see your good deeds and glorify your Father in heaven." (Matthew 5:14-16)

### Reading and Homework

Thank you, as always, for the continued support you give your children with their learning at home. It really does make a difference. The homework we set is designed to give children opportunities to practise and consolidate what they have been learning in class, helping to build confidence and independence.

This year has been designated the National Year of Reading, and it is a timely reminder of just how important reading is as a life skill. Developing a love of stories and the written word is vital, particularly at a time when children are spending increasing amounts of time online. Please do try to encourage your child at least four times a week. We are fortunate to have lots of excellent books in classrooms and in the school library that children can borrow. If your child is not currently bringing a book home, please let their teacher know and we will make sure they have one.

### Zoo 2 U

Reception had a fantastic visit from Zoo 2 U this week! The children met a tenrec, bearded dragon, cockroach, tortoise and even a barn owl, learning lots of fascinating facts about each animal. They behaved brilliantly throughout and impressed us with their excellent listening and thoughtful questions. What a wonderful experience for everyone involved!

### Bikeability

Well done to all of our Year 5 and 6 children who took part in Bikeability. They approached the sessions with enthusiasm and maturity, showing excellent effort throughout. Staff were incredibly proud of the children's positive attitudes, good manners and perseverance as they developed their cycling skills and confidence on the road. It was wonderful to see such responsible behaviour and determination from everyone involved. Very well done to you all.

### Dodgeball

This week a group of children took part in a dodgeball festival at Newcastle college. The children did amazing, winning most of their games! Well done all



### Star of the Week

Tiny Tigers	Evelyn
Busy Bees	Darcie
Performing Pandas	Emmie
Dazzling Dolphins	Isabella
Outstanding Owls	Ezra Ha
Fantastic Foxes	Mason
Learning Leopards	Chris

### Christian Value Certificate

Tiny Tigers	Daisy
Busy Bees	Bella
Performing Pandas	Loki
Dazzling Dolphins	Cain
Outstanding Owls	Lincoln
Fantastic Foxes	Archie
Learning Leopards	Ollie

### Special Mentions

**Robinson-Phillips Excellence in Kindness goes to:** Harry

**Mr Shenton's award:**  
Dodgeball Team

**Football achievements:** Oscar

**TTRS:** Class achievement Learning Leopards

**Individual:** Emmy

**Makaton:** Fiona

**Thursday 5<sup>th</sup> February 2025**  
Young Voices in Manchester

**Tuesday 10<sup>th</sup> February**  
Spring Disco

**Wednesday 11<sup>th</sup> February**  
Busy Bees' visit to Stafford Castle

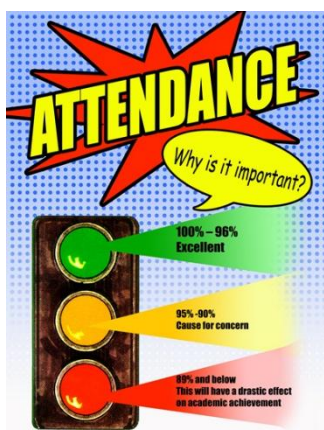
<b>Dojo Points and this week's Task</b>	<b>888</b>	<b>859</b>
This week's task is: Which rule do you not like? How		
Every Dojo task completed gets rewarded by 20 Dojos!		
Make sure you return the Task by 6 <sup>th</sup> February	<b>739</b>	<b>1,287</b>
Well done to Isabella (Y3), Edith (Y5) and Archie (Y5) for completing.		

### Attendance

Have you seen our attendance policy?

We have created a two page summary with all the key points. To view this please see the link below:

[St Luke's CofE \(VC\) Primary School - Attendance](#)



Tiny Tigers	96.4%
Busy Bees	94%
Performing Pandas	96.2%
Dazzling Dolphins	97%
Outstanding Owls	89%
Fantastic Foxes	97%
Learning Leopards	95%

### Looking ahead:

#### Spring Term 2026

[Spring Disco – Thursday 10th February](#)

[Busy Bees – Stafford Castle 11th February](#)

[Outstanding Owls - Ancient Greek Workshop - Thursday, 12<sup>th</sup> February 2026](#)

[Mother's \(special person\) Day Cake and Craft - Thursday, 5th March or 12th March, 2026 – Fill in form](#)

#### Summer Term

[Busy Bees – Florence Nightingale Workshop – Friday 8<sup>th</sup> May](#)

### Smylers' Holiday Club

Smylers are now taking bookings for February Half Term. This can be done through their usual Facebook Page or by contacting them on their direct line 01782 973870.

### Fantastic Foxes' Class Assembly and Cake Sale

This is on Thursday 13th February, starting at 9am and 5pm. We look forward to seeing you there and sharing our learning since September. We would also like the children in Fantastic Foxes to provide cakes for a sale. Monies raised will go towards school trips and experiences.

### Madula

We have received confirmation from the New Vic Theatre ticket office that the ticket line is now open, and tickets have been reserved specifically for parents of St Luke's and other participating schools. These tickets will be held until Wednesday 11th February 2026, after which they will be released to the general public, meaning availability cannot be guaranteed beyond this date.

To purchase tickets, parents should contact the New Vic Box Office on 01782 717 962. Please note that tickets

are available by phone only and cannot be reserved online. When calling, simply state which school you are connected to. If you experience any difficulties, please ask to speak to Mandy, the Head of the Box Office.

### Easyfundraising

Please remember to use easyfundraising every time you shop online. Over 8,000 retailers will donate to us, including all the big names like eBay, John Lewis & Partners, Argos, ASOS, Expedia, M&S, Just Eat, Uswitch and many more! This means you can raise FREE donations for us no matter what you're buying.

If you haven't signed up to support us yet, it's easy and completely FREE. These donations really help us, so it would be great if you could take a moment to get started!

You can find our easyfundraising page here: [https://www.easyfundraising.org.uk/causes/st-lukes-ce-primary-school-silverdale/?utm\\_medium=email&utm\\_campaign=pmc&utm\\_content=email-2](https://www.easyfundraising.org.uk/causes/st-lukes-ce-primary-school-silverdale/?utm_medium=email&utm_campaign=pmc&utm_content=email-2)

### Our School Prayer

**God give me the strength to accept the things I cannot change, Courage to change the things I can, And wisdom to know the difference. With the help of your love. Amen.**



### British Values

Next week:



### Individual Liberty

The Barbie doll highlights how everyone deserves to be themselves and use the tools that make them feel comfortable. It is a reminder that our differences are what make us special.

## In the news this week

A toy company called Mattel has released a new Barbie doll designed to represent people who have autism, with features such as a fidget spinner and noise-cancelling headphones. The doll was created with help from the autistic community, so more people can see themselves reflected in their toys.

### Things to talk about at home ...

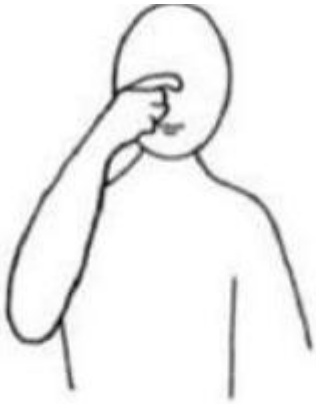
- Do you think it's important for toys to show different kinds of people?
- How do you feel when you see a character or toy that is like you?
- Can you come up with other examples of books or toys that aim to help people feel included?
- How can we help other people feel included when they might feel different or left out?

### Makaton Sign of the week...

Each week we'll be sharing a new Makaton sign that the children are learning in school. You'll find the sign in this newsletter, along with a QR code if you'd like to see more information or practise at home. Please ask your child to show you the sign—they'll love teaching you what they've learned! What is Makaton? Makaton is a way of communicating that uses simple signs and symbols alongside speech. It helps children (and adults) to understand and express themselves, especially if they find language tricky. You may have seen Makaton being used on TV, in hospitals, or in other schools—it helps make communication more inclusive for everyone. By learning Makaton together, we're giving all our children an extra tool to support understanding, confidence, and inclusion.

This week's sign is...sister

<https://www.bbc.co.uk/cbeebies/watch/something-special-daddy-sister-mummy>



Tap middle of nose twice

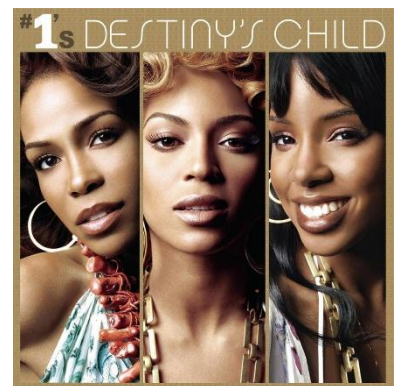
### Musician of the month

**About:** Destiny's Child was an American musical girl group whose final line-up comprised Beyoncé Knowles, Kelly Rowland, and Michelle Williams. The group began their musical career as Girl's Tyme, formed in 1990 in Houston, Texas. After years of limited success, the original quartet comprising Knowles, Rowland, LaTavia Roberson, and LeToya Luckett were signed in 1997 to Columbia Records as Destiny's Child. The group was launched into mainstream recognition following the release of the song "No, No, No" and their best-selling second album, *The Writing's on the Wall* (1999). Despite critical and commercial success, the group was plagued by internal conflict and legal turmoil.

**Genres:** R&B & Pop

**Active from:** 1990 - 2006

**Origin:** Houston (Texas), U.S.A.



### Snacks

Children order snacks on a Monday for the week. If your child is absent on Monday they will be able to order on their return to school.

### Lunches

To go alongside the daily menu below, there is also Hot Tomato Pasta, Jacket Potatoes with Baked Beans/Cheese or Tuna and sandwiches with either ham, cheese or tuna.

Snacks	
Milkshake	82p
Cup of Milk	38p
Bagel	38p
Pancake	45p
Toast	38p
Crumpet	38p

**Monday:** Margherita Pizza with Jacket Wedges  
Vegetarian option – Rainbow Pizza with Jacket Wedges

**Tuesday:** Italian Sausage Pasta Bake  
Vegetarian option – Penne with Garden Bolognese

**Wednesday:** Roast of the Day with Roasties and Gravy  
Vegetarian option – Toad in the Hole with Roasties and Gravy

**Thursday:** Cottage Pie  
Vegetarian option – Golden Topped Cottage Pie

**Friday:** Fish Fingers with Chips  
Vegetarian option – Vegetable Fingers with Chips

Pre-order link - [School Meals w/c 09/02/2026 \(Week 3\) - Menu Change – Fill in form](#)

Important Dates	
Thursday 5 <sup>th</sup> February 2026	Young Voices in Manchester
Tuesday 10 <sup>th</sup> February 2026	Spring Disco 3.10-4.30pm
Wednesday, 11 <sup>th</sup> February 2026	BB – Stafford Castle
Thursday, 12 <sup>th</sup> February 2026	OO – Ancient Greek Workshop
Thursday 12 <sup>th</sup> February 2026	Fantastic Foxes' Class Assembly 9am and 5pm and Cake Sale
Thursday 12 <sup>th</sup> February 2026	Spring Disco (all children) 3.10pm -4
Friday, 13 <sup>th</sup> February 2026	School Closes at 3.10 p.m. for Half Term  Non-uniform for an optional Easter Egg or chocolate bar
Monday, 16 <sup>th</sup> February 2026 to Friday, 20 <sup>th</sup> February 2026 Half Term	
Monday 23 <sup>rd</sup> February 2026	PTFA Meeting 9am
Thursday 5 <sup>th</sup> March 2026	World Book Day Celebrations
Thursday 5 <sup>th</sup> March 2026	Mothers' Day crafts and cake 2.30pm (Infants)
Thursday 12 <sup>th</sup> March 2026	Mothers' Day crafts and cake 2.30pm (Juniors)
Monday 16 <sup>th</sup> March 2026	Parental Meetings (invites sent out via compass)
Thursday 19 <sup>th</sup> March 2026	Outstanding Owls' Class Assembly 9am and 5pm and Cake Sale
Thursday 19 <sup>th</sup> March 2026	Easter Egg Tombola in School
Friday 20 <sup>th</sup> March 2026	Odd Sock day – no donation needed World Down Syndrome Day
Tuesday 24 <sup>th</sup> March 2026	KS2 Play 1.30pm and 5pm
Thursday 26 <sup>th</sup> March 2025	Easter Service 1.30pm
Friday, 27 <sup>th</sup> March 2026	School closes at 3.10 p.m. for Easter Holidays
Monday, 30 <sup>th</sup> March 2026 to 10 <sup>th</sup> April 2026 Easter Holidays	
Thursday, 16 <sup>th</sup> April 2026	Photos - Class Groups, Leavers, Reception Individuals and Smylers Graduations
Thursday 22 <sup>nd</sup> April	Dazzling Dolphins' Class Assembly 9am and 5pm and Cake Sale
Thursday 30 <sup>th</sup> April	Performing Pandas' Class Assembly 9am and 5pm and Cake Sale
Friday, 8 <sup>th</sup> May 2026	Busy Bees - Florence Nightingale Workshop
Monday 11 <sup>th</sup> May 2026	SATS week
Monday 18 <sup>th</sup> May 2026	Residential for Key Stage 2
Monday, 1 <sup>st</sup> June 2026	INSET Day (school closed to pupils)
Tuesday, 2 <sup>nd</sup> June 2026	School Opens
Tuesday 16 <sup>th</sup> June	Sports Day 9am
Thursday 18 <sup>th</sup> June	Busy Bees' Class Assembly 9am and 5pm and Cake Sale
Thursday 18 <sup>th</sup> June 2026	Fathers' Day cakes and crafts 2.15pm
Tuesday 23 <sup>rd</sup> June 2026	Reserved Sports Day 9am
Thursday 25 <sup>th</sup> June 2026	Tiny Tigers' Class Assembly 9am and 5pm and Cake Sale
Wednesday 8 <sup>th</sup> July 2026	Musical Celebration 1.30pm (All parents are welcome)
Thursday 9 <sup>th</sup> July 2026	Prom and Disco 3-4.30pm KS1 and 6-8pm for KS2
Friday 10 <sup>th</sup> July 2026	Reports out

Tuesday 14 <sup>th</sup> July 2026	1.30pm and 5pm Year 6 Play
Friday 17 <sup>th</sup> July 2026	Leavers' Assembly 1pm
Friday, 17 <sup>th</sup> July 2026	School closes for Summer Holidays
Monday, 20 <sup>th</sup> July 2026	INSET Day (School closed to pupils)