

Great Oak CE  
Learning  
Federation  
Spring Term 2025



Friday 14<sup>th</sup>  
February

# St Luke's CE Primary School News

## Our Vision

**'Growing in Strength, Love and Wisdom We Shine'**

**We shine like bright stars in the sky**

"You are the light of the world. A town built on a hill cannot be hidden. Neither do people light a lamp and put it under a bowl. Instead they put it on its stand, and it gives light to everyone in the house. In the same way, let your light shine before others, that they may see your good deeds and glorify your Father in heaven." (Matthew 5:14-16)

**The happiness of your life depends upon the quality of your thoughts – Marcus Aurelius**

### Online Safety Day

On Tuesday the whole school took part in this year's Safer Internet Day awareness. The message this year was about being able to spot a scam 'S-C-A-M'. The message was about if it appears too good to be true, it probably is! There is also free training for all parents on Gaming on the following website:

[For parents & carers | Ygam](#)

### Fantastic Foxes' Class Assembly and Cake Sale

This is on Thursday 6<sup>th</sup> March, starting at 5pm. We look forward to seeing you there and sharing our learning since September. We would also like the children in Fantastic Foxes to provide cakes for a sale. Monies raised will go towards school trips and experiences.

### Information shared at recent Class Assemblies and Workshops

Year 1 Phonics Information [Phonics | St Luke's CofE \(VC\) Primary School](#)

Year 4 Multiplication Tables Check [Multiplication Check | St Luke's CofE \(VC\) Primary School](#)

Year 6 KS2 SATS information [KS2 SATs | St Luke's CofE \(VC\) Primary School](#)



### Star of the Week

Tiny Tigers	George
Busy Bees	Sofia
Performing Pandas	Vivien
Dazzling Dolphins	Martha
Outstanding Owls	Whole Class
Fantastic Foxes	Arthur
Learning Leopards	Mirabela

### Christian Value Certificate

Tiny Tigers	Alarna-Grace
Busy Bees	Millie-Anne
Performing Pandas	Elio
Dazzling Dolphins	Ivie
Outstanding Owls	Carter
Fantastic Foxes	Skylar
Learning Leopards	Maisie

### Attendance

Tiny Tigers	82%
Busy Bees	86%
Performing Pandas	91%
Dazzling Dolphins	94%
Outstanding Owls	97%
Fantastic Foxes	92%
Learning Leopards	96%

**Monday, 24<sup>th</sup>  
February 2025**  
School opens

**Wednesday 26<sup>th</sup>  
February**  
Y6 visit Shrewsbury  
Prison

**Sunday 2<sup>nd</sup> March**  
KS2 Residential

**Thursday 6<sup>th</sup> March**  
Book Day  
Dressing up optional

## Special Mentions

### Well done

Myla for having a zoo experience



**The Robinson-Phillips Excellence in Kindness goes to:** Myla (DD) Dojo

Poster for positive thoughts – well done to you all.

### Mr Shenton's Award goes

**to:** This week our netball team played their first games of the season. A win and a draw from their opening games means we are in with a chance of winning the league if results go our way in the next round of fixtures. It was a pleasure to watch the improvements they have made. Well done girls! Mr Shenton



### Outstanding Owls' and Learning Leopards' Class assembly recordings

Well done to both the Outstanding Owls and Learning Leopards, we will share on Dojo when they have been uploaded. Thank you to all the donations of cakes. Money that has been raised will go towards class experiences.

## Class Dojos

### Dojo Task

Draw a picture of something that you enjoyed whilst on the half term holiday. It might be a walk, chilling reading a book or going out with your family.

Return by Friday 28<sup>th</sup> February to earn 20 Dojos

### World Book Day

This year World Book Day is taking place on 6th March 2025 and there will be lots of activities going on in school.

Children will be invited to dress up as a book character. If anyone has any costumes that their child has outgrown and you would like to donate for someone else to use please let your child's teacher know. We do have lots of costumes in school that children can borrow.

There is a website (that I shared last year) with some easy-to-follow ideas.

<https://www.madeformums.com/toddler-and-preschool/last-minute-easy-world-book-day-costumes/>

## Competition

We will also be holding a competition for all children to take part. Children are invited to complete a bunting triangle (which will be sent home). The theme is to encourage children to read. It could be a picture of your favourite book, where you like to read or how reading makes you feel!

Closing date is: Monday 3rd March

The prize will be a book of their choice delivered to their home.

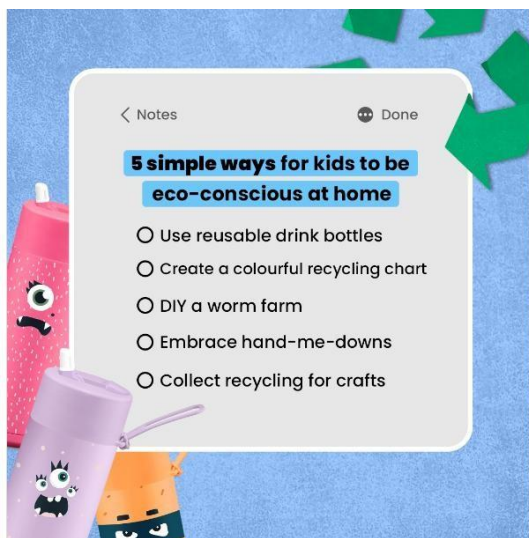
## Boreatton Park - Residential 2025

Please find the link with all information regarding the residential. If you have any questions, please do not hesitate to contact me.

Children will be coming home on Friday 14<sup>th</sup> February with a medical form. This needs to be brought back in the first week back.

<https://www.st-lukes-silverdale.staffs.sch.uk/boreatton-park-2025/>

## Climate catch up corner



[Climate Action and Sustainability | St Luke's CofE \(VC\) Primary School](#)



## Reading

Each week it is expected that the children read at least four times. Next week we would like every class to achieve 85% or higher. Don't forget to bring in your reading diaries for checking on Thursday. Every child that reads independently or with an adult four times gets entered into the draw to win a book from the vending machine. You've got to be in it to win it! If you are unable to read with your child, the library is always open at play times.

## Tips for reading at home

### Read aloud regularly

Try to read to your child every day. It's a special time to snuggle up and enjoy a story. Stories matter and children love re-reading them and poring over the pictures. Try adding funny voices to bring characters to life.



## Musician of the month

Link for more information

[February - The Supremes | St Luke's CofE \(VC\) Primary School](#)



## Our School Prayer

*God give me the strength to accept the things I cannot change, Courage to change the things I can, And wisdom to know the difference. With the help of your love. Amen.*

## Christian Values

Every half-term we focus on a different Christian value. This half-term it is Courage. If you would like to read more information or complete any of the home activities, please see the link below:

[Spring Term 1 2025 - Courage | St Luke's CofE \(VC\) Primary School](#)

## Bible verse for next week:

[Spring Term 1 | St Luke's CofE \(VC\) Primary School](#)

## Snacks

Children order snacks on a Monday for the week. If your child is absent on Monday they will be able to order on their return to school.

Snacks	
Milkshake	75p
Bagel	35p
Pancake	45p
Toast	35p
Crumpet	35p

## Lunches

To go alongside the daily menu below, there is also Hot Tomato Pasta, Jacket Potatoes with Baked Beans/Cheese or Tuna and sandwiches with either ham, cheese, tuna or egg.

Week Beginning 24<sup>th</sup> February

**Monday:** Margherita Pizza with Jacket Wedges

Vegetarian option – Rainbow Pizza with Jacket Wedges

**Tuesday:** BBQ Chicken Tortilla with Golden Rice

Vegetarian option – Mild & Sweet Veggie Curry with Golden Rice

**Wednesday:** Roast of the Day with Roasties & Gravy

Vegetarian option – Loaded Yorkshire with Roasties

**Thursday:** Italian Sausage Pasta Bake

Vegetarian option – Penne with Vegeballs & Tomato Sauce

**Friday:** Fish Fingers and Chips

Vegetarian option – Vegetable Fingers with Chips

Week Beginning 3<sup>rd</sup> March 2025

Pre Order School Meals

Normal Menu

<https://forms.office.com/e/9xSHinT882>

Dairy and Soya Free (medical condition confirmed)

<https://forms.office.com/e/nTNAcN7f9Q>

## Important Dates

Monday, 24th February 2025	School opens
Wednesday, 26 <sup>th</sup> February 2025	LL – Shrewsbury Prison
Sunday 2 <sup>nd</sup> March	Residential to PGL
Thursday 6 <sup>th</sup> March	World Book Day
Thursday 6 <sup>th</sup> March	Fantastic Foxes' Class Assembly 5pm and Cake Sale
Wednesday 12 <sup>th</sup> March	Parental Meetings
Thursday 20 <sup>th</sup> March 2025	Craft and Cake with mum/Special person – See Dojo for more details (Infants)
Thursday 20 <sup>th</sup> March 2025	Dazzling Dolphins' Class Assembly and Cake Sale 5pm
Thursday 27 <sup>th</sup> March 2025	Craft and Cake with mum/Special person – See Dojo for more details (Juniors)
Monday, 31 <sup>st</sup> March, 2025	Busy Bees – Manchester Airport Trip
Thursday 3 <sup>rd</sup> April 2025	Non-uniform Day – Easter Egg Donation Please
Thursday 3 <sup>rd</sup> April 2025	Performing Pandas' Class Assembly and Cake Sale 5pm
<b>Friday, 4<sup>th</sup> April, 2025</b>	<b>TT – Zoo 2 U visit (school based)</b>
Friday, 4 <sup>th</sup> April 2025	FF – Peak Wildlife Trip
Tuesday 8 <sup>th</sup> April 2025	KS2 Club Play 5pm
Wednesday 9 <sup>th</sup> April 2025	KS2 Club Play 1.30pm
Thursday, 10 <sup>th</sup> April 2025	School Photographs - Class Groups, Graduations and Leavers
Thursday, 10 <sup>th</sup> April 2025	Easter Egg Tombola – 50p a go or 3 for £1.00
Thursday 10 <sup>th</sup> April 2025	Easter Service 1.30pm
Friday, 11 <sup>th</sup> April 2025	School closes for Easter Holidays
Monday, 14 <sup>th</sup> April 2025 to Friday, 25 <sup>th</sup> April 2025	Easter Holidays
Monday, 28 <sup>th</sup> April 2025	School Opens
Monday, 5 <sup>th</sup> May 2025	Bank Holiday Monday
Thursday 8 <sup>th</sup> May 2025	Busy Bees' Class Assembly and Cake Sale 5pm
Monday, 12 <sup>th</sup> May 2025 to Thursday, 16 <sup>th</sup> May 2025	KS2 SATs
Friday, 23 <sup>rd</sup> May 2025	School closes at 3.10 p.m. for Half Term
Monday, 26 <sup>th</sup> May 2025 to Friday, 30 <sup>th</sup> June 2025	Half Term Holiday
Monday 2 <sup>nd</sup> June 2025	INSET Day - School closed to Pupils
Thursday 12 <sup>th</sup> June 2025	Sports Day 9am
Thursday 19 <sup>th</sup> June 2025	Tiny Tigers' Class Assembly and Cake Sale 5pm
Thursday 26 <sup>th</sup> June 2025	Reserved Sports Day 9am
Tuesday 8 <sup>th</sup> July 2025	Y6 Play 1.30pm
Wednesday 9 <sup>th</sup> July 2025	Y6 Play 5pm
Thursday 10 <sup>th</sup> July 202	Prom and Disco
Friday 11 <sup>th</sup> July 2025	Reports to Parents

Friday 11 <sup>th</sup> July 2025	Celebration of the Arts 1.30pm (all parents are invited)
Friday 18 <sup>th</sup> July 2025	Leavers' Assembly 1pm
Friday 18 <sup>th</sup> July 2025	Break up for the Summer holidays
Monday, 1 <sup>st</sup> September 2025	INSET Day
Tuesday, 2 <sup>nd</sup> September 2025	INSET Day
Wednesday, 3 <sup>rd</sup> September 2025	School Opens
Thursday, 4 <sup>th</sup> September 2025	School Photographs - Families, Siblings and Individuals
Friday, 24 <sup>th</sup> October 2025	School closes at 3.10 p.m. for Half Term
Monday, 27 <sup>th</sup> October 2025 to Friday, 31 <sup>st</sup> October 2025	Half Term
Monday, 3 <sup>rd</sup> November 2025	School Opens
Friday, 19 <sup>th</sup> December, 2025	School closes at 3.10 p.m. for Christmas
Monday 22 <sup>nd</sup> December 2025 to Friday, 2 <sup>nd</sup> January, 2026	Christmas Holidays
Monday, 5 <sup>th</sup> January, 2026	INSET Day (school closed to pupils)
Tuesday, 6 <sup>th</sup> January, 2026	School opens
Friday, 13 <sup>th</sup> February 2026	School Closes at 3.10 p.m. for Half Term
Monday, 16 <sup>th</sup> February 2026 to Friday, 20 <sup>th</sup> February 2026	Half Term
Monday, 23 <sup>rd</sup> February 2026	School Opens